

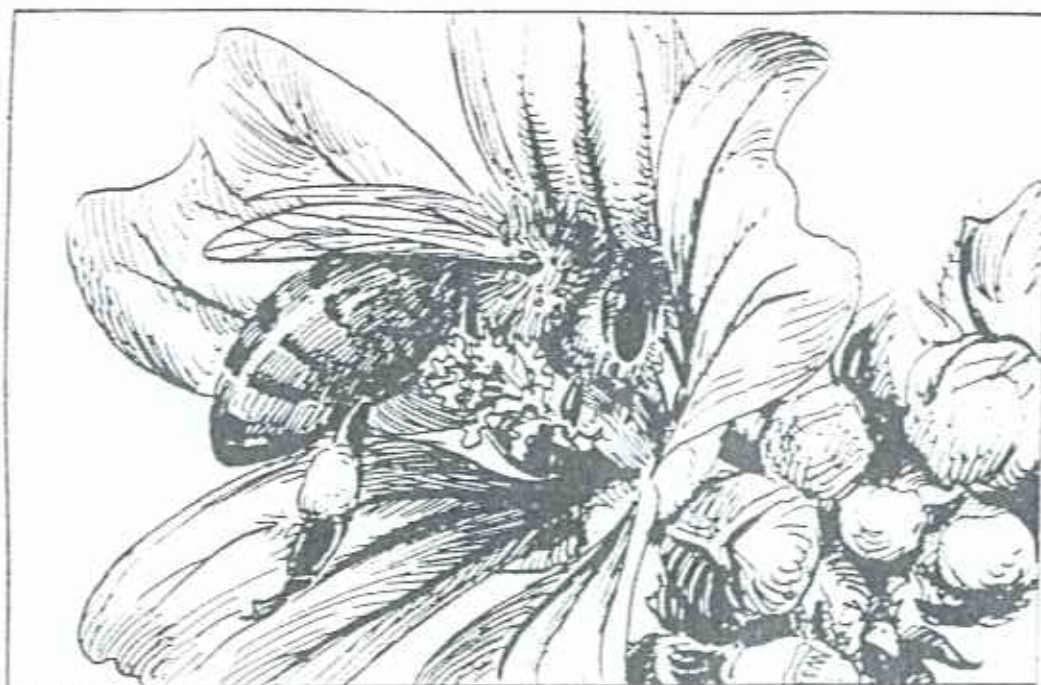


COMMISSION OF THE EUROPEAN COMMUNITIES
AGRICULTURE

Research and Technological Development Programme
in the field of Competitiveness of Agriculture
and Management of Agricultural Resources
(1989-1993) CAMAR

BEES FOR POLLINATION

Proceedings of an EC workshop
Brussels,
2-3 March 1992



DIRECTORATE-GENERAL FOR AGRICULTURE
Division for the Coordination
of Agricultural Research

TABLE OF CONTENTS

	Pages
INTRODUCTION	1
GROUP I : POLLINATION - RELATIONSHIP : FLOWERS INSECTS	5
The interdependence of agriculture and apiculture in the European Community WILLIAMS Ingrid	7
Recent developments in insect pollination of horticultural crops DE RUIJTER Arie	19
Survey of pollinators of legumes in Portugal Study of their specific flower range MACIEL DE A. CORREIA Maria de Lourdes	29
Bee pollination in Phrygana facts and actions PETANIDOU Theodora	37
Problems and perspectives of the entomophilous pollination in Italy RICCARDELLI D'ALBORE Gian Carlo	49
Forage legumes in Europe Status of research on their pollination TASEI Jean-Noël	55
GROUP II : PRESENT AND FUTURE USE OF POLLINATION INSECTS	63
The faunistic drift of Apoidea in Belgium RASMONT Pierre	65
Necessary research to improve pollination technology BORNECK Raymond	89

GROUP IV : CONCLUSIONS AND RECOMMANDATIONS

221

LIST OF PARTICIPANTS

229

INTRODUCTION

This publication contains the proceedings of a seminar held in Brussels on 2-3 March 1992, under the auspices of the Commission of the European Communities, Directorate General for Agriculture, as part of the Community programme for research and technological development in the field of "Competitiveness of agriculture and management of agricultural resources (1989-1993)" (CAMAR).

The pollinating impact of honey-bees and other such insects is vital for crops and wild flowers. The economic worth of crops pollinated by honey-bees and insects is difficult to define but has been estimated at approximately 4250 MECU for the EEC (Borneck 1989).

Impoverished mellifera food resources, due to cultivation of semi-natural zones (hence a lack of suitable nesting areas), the use of herbicides and a massive use of fertilisers affecting the variety of wild flowers, have resulted in a decline in pollinating insects. Furthermore, the honey-bee has been affected by the appearance of the dust mite and the market decline of honey-bee products has considerably reduced the number of beekeepers.

The dwindling population of insects is a major issue for the pollination of wild plants and crops.

It is important to take this decline into consideration to improve our knowledge and to define courses of action which would ensure both optimum pollination by suitable insects and satisfactory thriving conditions.

The aim of this workshop is to assess the actual situation with regard to pollination issues and initiatives taken on local, regional and national scale. By summarising existing information, it defines on one hand, what studies and research are required, and on the other hand, provides guidelines for an overall pollination policy based on safeguarding, developing and using pollinating insects. Complementary land development measures and suitable cropping techniques are also examined.

These pollination guidelines will be consistent with less intensive, more ecologically and environmentally sound farming methods as encouraged in the reform of the Common Agricultural Policy.

LIST OF PARTICIPANTS

BELGIUM

ANDRE Pascal

Centre Apicole de Recherche et d'Information asbl (CARI)
Place Croix du Sud, 4
B-1348 LOUVAIN-LA-NEUVE
Tél. 32(0) 10 47 34 16
Fax. 32(0) 10 47 34 90

BRUNEAU Etienne

Centre Apicole de recherche et d'Information asbl (CARI)
Place Croix du Sud, 4
B-1348 LOUVAIN-LA-NEUVE
Tél. 32(0) 10 47 34 16
Fax. 32(0) 10 47 34 90

DE GREEF Myriam

RIJKSSTATION VOOR NEMATOLOGIE EN ENTOMOLOGIE
Van Gansberghelaan, 96
B-9820 MERELBEKE
Tél. 32(0) 91 52 02 12
Fax. 32(0) 91 52 02 15

DE WAEL Lutgart

RIJKSSTATION VOOR NEMATOLOGIE EN ENTOMOLOGIE
Van Gansberghelaan, 96
B-9820 MERELBEKE
Tél. 32(0) 91 52 20 85
Fax. 32(0) 91 52 15 83

GOLFIDIS Costa

C.O.P.A. - COGECA
rue de la Science, 23-25
B-1040 BRUXELLES
Tél. 32(0) 2 287 27 11
Fax. 32(0) 2 287 27 00

HOUBAERT D.

UNIVERSITY OF GENT
Laboratory of Zoophysiology
K.L. Ledeganckstraat, 35
B-9000 GENT
Tél. 32(0) 91 64 52 46
Fax. 32(0) 91 21 44 78

DENMARK

SCHOUSBOE Chr.

DANISH RESERACH SERVICE FOR PLANT AND SOIL
SCIENCE Department of Apiculture

Skovbrynet, 18

DK-2800 LYNGBY

Tél. 45 45 93 09 99

Fax. 45 45 93 08 19

FRANCE

BORNECK Raymond

APIMONDIA - ITAPI

La Guyonnerie

F-91110 BURES-SUR-YVETTE

Tél. 33 84 81 50 07

Fax. 33 84 81 50 07

COLIN Marc-Edouard

I.N.R.A.

CENTRE DE RECHERCHES AGRONOMIQUES D'AVIGNON

Domaine Saint-Paul

F-84143 MONTFAVET CEDEX

Tél. 33 90 31 60 30

Fax. 33 90 31 62 70

FLEURYNCK Catherine

POLLITECH - GROUPE DUCLOS

Route Nationale, 86

F-13240 SEPTEMES -LES-VALLONS

Tél. 33 91 96 30 00

Fax. 33 91 96 25 27

JOURDAN Pascal

ADAPI Chambre Régionale d'Agriculture

Av. H. Pontier, 22 Maison des Agriculteurs

F-13626 AIX EN PROVENCE

Tél. 33 42 23 05 23

Fax. 33 42 23 14 18

GREAT-BRITAIN

WILLIAMS Ingrid

AFRC Institute of Arable Crops Research,
ROTHAMSTED EXPERIMENTAL STATION
UK-AL5 2JQ HARPENDEN, HERTS
Tél. 44 582 763 133
Fax. 44 582 760 981

**GREAT-DUCHY OF
LUXEMBOURG**

CONTER Carlo

Administration of the Technical Services for Agriculture,
Agriculture Division - Horticulture Service
Route d'Esch, 16 - BP 1904
L-1019 LUXEMBOURG
Tél. 352 45 71 72 - 230
Fax. 352 45 71 72 - 341

GREECE

PETANIDOU Theodora

ARISTOTELIAN UNIVERSITY
Department of Ecology, School of Biology
School of Biology

GR-54006 THESSALONIKI
Tél. 31 99 28 96 (ext 239)
Fax. 31 20 61 38

ITALY

PERSANO-ODDO Livia

ISTITUTO SPERIMENTALE
per la Zoologia Agraria - Sezione di Apicoltura
Via Leonida Rech, 36/42
I-00156 ROMA
Tél. 39(6) 86 89 54 56 / 86 89 55 42
Fax. 39(6) 86 89 54 63

RICCIARDELLI D'ALBORE GianCarlo

ENTOMOLOGICAL INSTITUTE
University Borgo XX Guigno
I - 06100 PERUGIA
Tél. 39 75 585 60 27 / 585 60 26
Fax. 39 75 585 60 39

PORTUGAL

MACIEL CORREIA Maria de Lourdes
UNIVERSIDADE DO PORTO
I.C.B.A.S.
Largo do Prof. Abel Salazar, 2
P-4000 PORTO
Tél. 351 2 31 03 59
Fax. 351 2 20 01 918

SPAIN

ORTIZ Y SANCHEZ Javier F.
ESCUELA UNIVERSITARIA POLITECNICA
Department de biologia animal y ecologia
E-04120 La Cánada ALMERIA
Tél. 34(9)51 215 001-02
Fax. 34(9)51 215 069